

*Tenda*



All for better networking.

# RX9 Pro

AX3000 Dual Band Gigabit Wi-Fi 6 Router



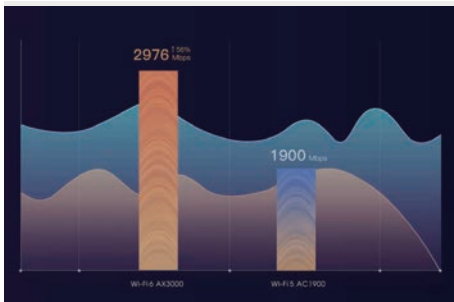
# RX9 Pro

## AX3000 Dual Band Gigabit Wi-Fi 6 Router

### Products Description

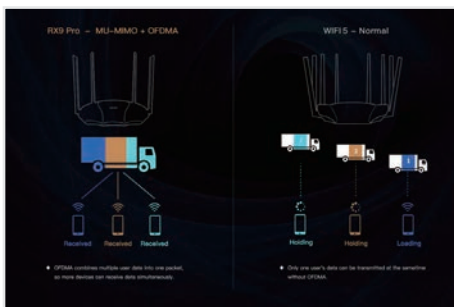
RX9 Pro is an AX3000 Wi-Fi 6 router with the dual-band concurrency rate up to 2976Mbps (2.4GHz:574Mbps, 5GHz:2402Mbps). It's equipped with dual-core 1.6GHz CPU, providing powerful processing capacity and more stable operation. RX9 Pro 2.4GHz & 5GHz adopt external FEM design simultaneously to improve spectrum utilization and communication efficiency. By using OFDMA+MU-MIMO technology, the delay is reduced, more devices can be connected to the Internet at the same time and the transmission efficiency is significantly improved.

# Selling Points



## AX3000 for Ultra-Fast Transmission Speed

RX9 Pro is a Dual-band Wi-Fi 6 router that provides 160MHz bandwidth and 1024-QAM for ultra fast wireless connection. With a total networking speed of 2976Mbps — 574Mbps on the 2.4GHz band and 2402Mbps on the 5GHz band.



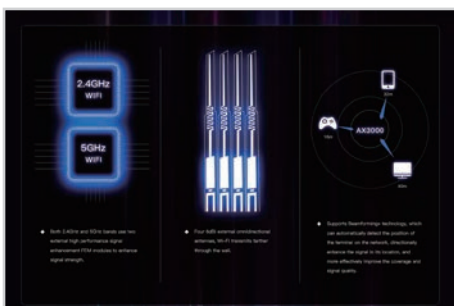
## Minimize Lag for a better smart products experience

With the innovative combination of OFDMA + MU-MIMO, 802.11ax technology provides greater network capacity and efficiency in congested environments than Wi-Fi 5. OFDMA divides each channel into small sub-channels, allowing signals from multiple appliances to be bundled together and transmitted simultaneously, reducing latency for a smoother Wi-Fi experience.



## 1.6GHz Dual-Core Processor Provides Faster and More Stable Wi-Fi experiences

Equipped with 1.6GHz high performance Dual-core processor, the operating capacity reaches up to 3000 DMIPS, and NPU processing speed reaches 2220 MHZ, which improves network load capacity, responds faster and more stable.

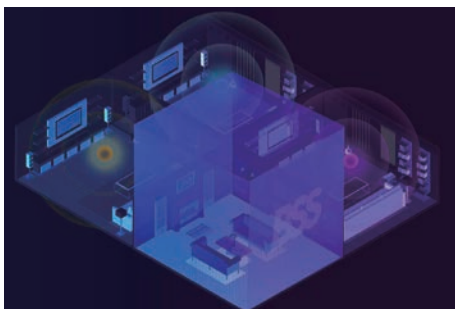


## " Four Plus Four " Makes Full Wi-Fi Coverage

Four FEM Modules with the independent signal amplification work with four 6dBi external omnidirectional dual-band antennas for wider Wi-Fi coverage.

## Selling Points

---



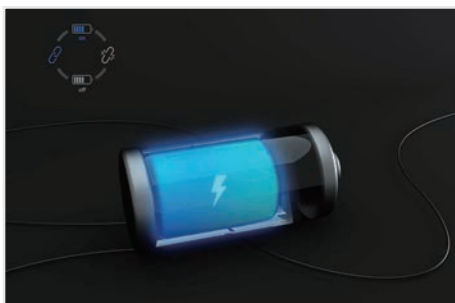
### BSS Coloring Reduces Interference and Improves Efficiency

Supporting BSS coloring technology, RX9 Pro effectively alleviates co-frequency interference, improves spectrum utilization and communication efficiency.



### IPv6 Supported

Compared with IPv4 protocol, IPv6 has a large number of IP addresses. Unordered Internet access through address translation can shorten the data transmission time between Internet devices and servers.



### TWT Extends Battery Life of Connected Devices

TWT (Target Wake-up Time technology) can effectively reduce the power consumption of terminal equipment and greatly extend its battery life.



### The Next-Gen Security Protocol WPA3

The RX9 Pro carries a new generation of Wi-Fi security standard WPA3, which increases the difficulty of algorithmic and network password cracking to prevent forced-attacks, violent cracking.

# Technical Specifications

## Hardware Specifications

Standard&Protocol	IEEE802.3, IEEE802.3u, IEEE802.3ab
Interface	10/100/1000Mbps WAN port*1; 10/100/1000Mbps LAN ports*3;
Antenna	4*6dbi external antennas
Button	1*WPS/Reset button
Power	Output:DC 12V1.5A
LED	1*LED
Dimension	(L*W*H)272.44x162.85x43.71mm

## Wireless Function

Wireless Standard	802.11b/g/n/a/ac/ax
Data Rate	5GHz:2402Mbps 2.4GHz:574Mbps
Frequency	2.4GHz & 5GHz
Wireless Security	WPA-PSK WPA2-PSK WPA/WPA2-PSK WPA3-SAE WPA3-SAE/WPA2-PSK

## Software Function

Internet Connection Type	PPPOE Dynamic IP, static IP
Operating Mode	Wireless Router Mode AP Mode
DHCP	DHCP Server DHCP Client List
Security	Client Filter ( supports black list and white list ) Parental Control ( supports black list and white list )
Firewall	ICMP Flood Attack Defense TCP Flood Attack Defense UDP Flood Attack Defense Ignore Ping Packet From WAN Port
DDNS	Support DynDNS, No-ip
Other Function	<ul style="list-style-type: none"><li>· Support Virtual Server</li><li>· Support Port Forwarding</li><li>· Support DMZ Host</li><li>· Support Upnp</li><li>· Support IPV6</li><li>· Tenda WiFi App</li><li>· LED Control</li><li>· Bandwidth Control</li><li>· MAC address clone</li><li>· Static Routing</li><li>· System LogBackup Restore configurations</li><li>· Firmware upgrade from local&amp;online</li></ul>

## Other Features

Temperature	Operating Temperature : 0 °C ~40C Storage Temperature : -40C ~70C
Humidity	Operating Humidity : 10 %~90% RH non-condensing Storage Humidity : 5 %~ 90%RH non-condensing
Default Settings	192.168.0.1
Certification	CE, RoHS, FCC
EIRP Power(Max.)	2.400-2.4835 GHz:19.83dBm(EIRP) 5.150-5.250 GHz:22.98dBm(EIRP)
Package Content	Wireless Router*1 Ethernet Cable*1 Power Adapter*1 Installation Guide*1

---

**SHENZHEN TENDA TECHNOLOGY CO.,LTD.**

Tenda Technology Bldg.,Int' IE-City,  
#1001 Zhong Shan Yuan Rd.,Nanshan District,Shenzhen China.

E-mail: [support@tenda.com.cn](mailto:support@tenda.com.cn)  
Tel: +86-755-2765 7098  
Fax: +86-755-2765 7178  
PC: 518055

